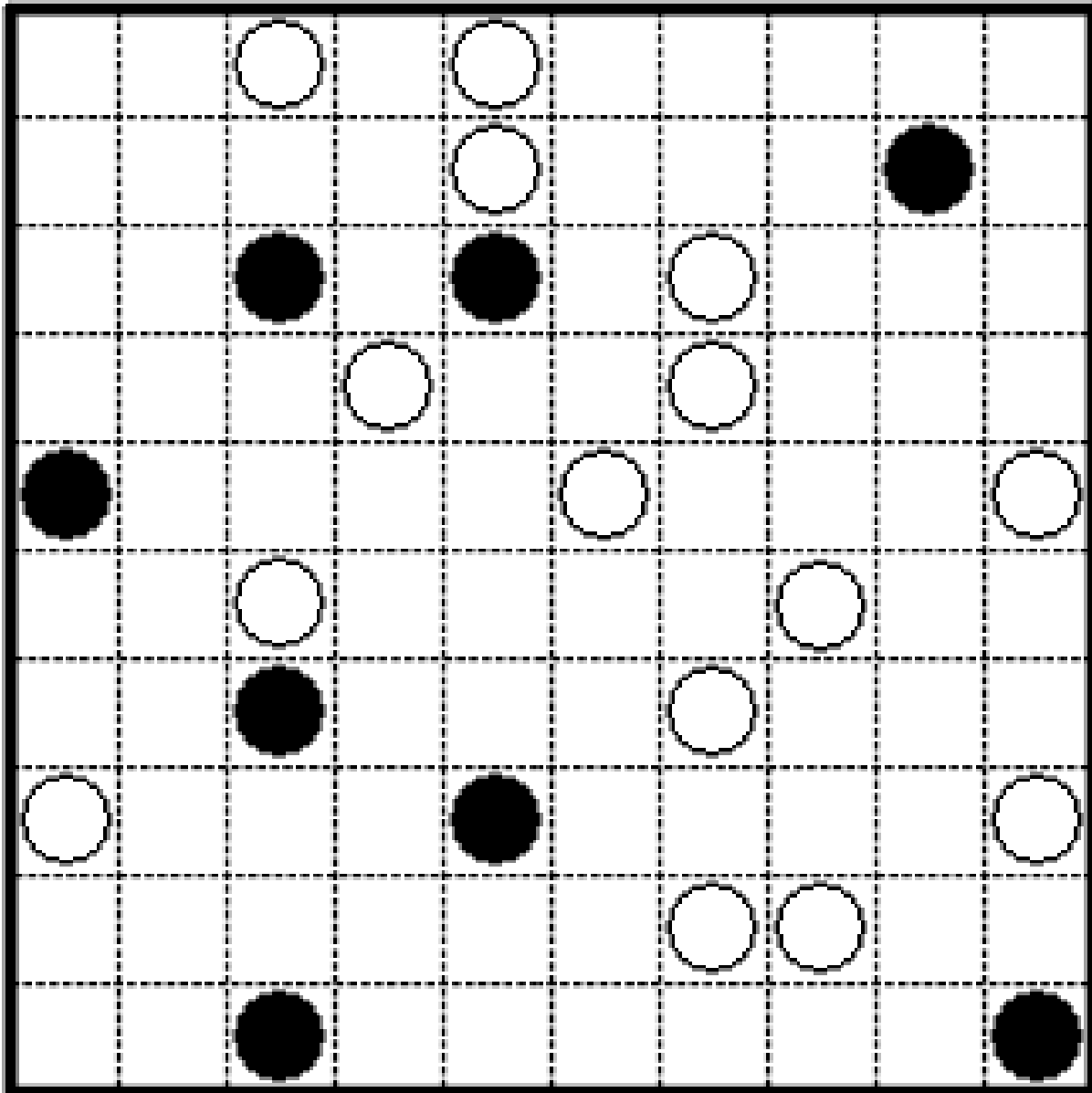


# The Pearl Fishers Masyu Puzzle



Draw a single loop through the middles of the cells that passes through each of the black and white pearls but does not cross itself.

When the line goes through a black pearl it must go straight through at least one cell before and after the pearl, and turn right angles at the pearl.

When the line goes through a white pearl, it must go straight through the pearl but must turn at right angles in either the cell before or the cell after the pearl.